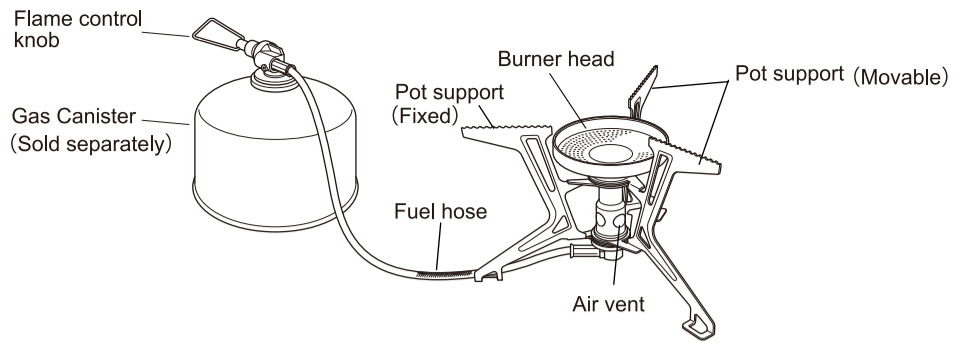
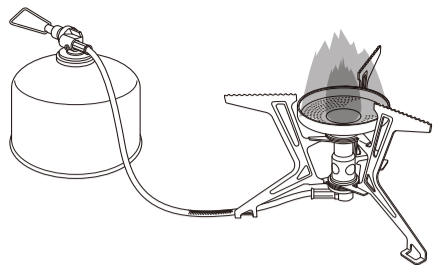


MICRO REGULATOR STOVE  
**FUSION Trek**  
OD-1FT

Shin Fuji Burner CO., LTD.

1-1-3 Miyukihama, Mito-cho, Toyokawa-city, Aichi-pref, 441-0314 Japan  
Phone: +81 533 75 5000 FAX: +81 533 75 5033  
info@sotooutdoors.com  
www.sotooutdoors.com



**Instruction Manual**

FOR OUTDOOR USE ONLY

**Important: Read these instructions for use carefully so as to familiarise yourself with the appliance before connecting it to its gas container. Keep these instructions for future reference.**

**⚠ DANGER** USE ONLY IN WELL-VENTILATED AREAS. CARBON MONOXIDE HAZARD: USING THIS APPLIANCE IN AN ENCLOSED AREA MAY CAUSE DEATH. DO NOT USE IN CARS, VANS, TENTS, MARINE CRAFT, MOVABLE HOMES OR SIMILAR LOCATIONS.

**Applicable Fuel**

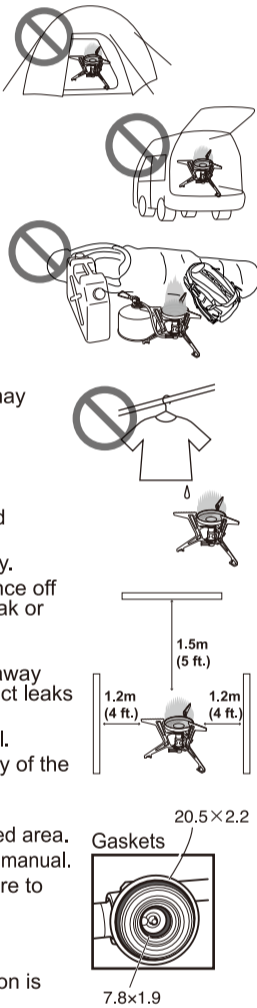
**Regarding the fuel canister**

This stove shall only use a fuel cartridge certified to EN 417 with a mixture of 70% butane/30% propane. It may be hazardous to attempt to fit other types of gas containers. Use SOTO brand gas cartridge or an approved equivalent gas cartridge.  
Usage time : approx. 1.3 hour (when using one SOTO SOD-725T 250g gas canister)  
Usage time is calculated from combustion data for 30 minutes after ignition at 25°C with no wind.  
Nominal Heat Input : 3.5 kW( 3000 kcal/h ) Gross( 230 g/h )  
The orifice size : Φ 0.47mm  
Type of gas : Butane-propane mixture  
Category : A vapor Pressure Propane Butane Mix Appliance.

**CAUTIONS and WARNINGS**

**Regarding the appliance FOR OUTDOOR USE ONLY**

- This stove can produce carbon monoxide, which has no odor. Using it in an enclosed space can be deadly. Never use this stove in an enclosed space, including a camper, tent, car, or home. Failure to follow this instruction may cause injury or death.
- Incorrect handling may lead to the possibility of death or serious injuries to the operator. This product is an outdoor stove for camping and hiking. This stove is designed for the purpose of boiling hot water and preparing a meal. Never use this stove for anything other than for these intended purposes.
- Never use the stove for drying clothes etc. Failure to follow this instruction may cause fire, death, bodily injuries, and property damage.
- Never use the stove near any kind of flammable materials. Keep all such materials at least 1.2m/4ft away from the sides of the stove and at least 1.5m/5ft away from the top while stove is in use.
- Never place flammable objects in, on or around the stove.
- Never use the stove in a place where there is danger of falling objects.
- Prepare a safe, flat surface when using the stove.
- Do not use the stove in places where there is the possibility that the surface may deform or discolor due to reflective heat from the stove.
- Caution: Never touch the stove when it is hot.
- Keep children away from the stove when it is in use.
- Never put face or hands close to or over the burner when igniting the stove.
- If abnormal sound/flame is heard or observed, stop using unit immediately and contact your local dealer or SOTO for service.
- Do not use this appliance if it is leaking, damaged or does not operate properly.
- In the event that a leak (smell of gas) is detected, immediately turn the appliance off if in use. Detach the fuel canister from the appliance and check to see if the leak or smell continues.
- If there is a leak from this appliance (smell of gas) and the gas flow cannot be stopped, move the appliance to a well-ventilated location, preferably outside, away from any ignition source. Check for leaks using soapy water. Do not try to detect leaks using a flame.
- Be sure to remove appliance from carrier pouch, or any other packing material.
- When in use, be sure that there is enough oxygen supply and do not cover any of the combustion air openings located on the post of the stove body.
- Be sure to use this stove on a stable, flat surface.
- Always use this stove in an open-air environment. Never use stove in an enclosed area.
- Do not use the appliance in any way or for any purpose other than described in this manual.
- Confirm that pot supports are secured in place prior to use by applying pressure to avoid potential bodily harm.
- This appliance is to be operated on a horizontal surface.
- Use only one stove for each pot, and do not allow any vessel to boil dry.
- After several uses, parts of the stove may become discolored. This discoloration is natural and does not affect the stove's performance.
- Check that seals between the appliance and the gas container are in place and in good condition before connecting to the gas container. Do not use the appliance if it has damaged or worn seals. Do not use an appliance that is leaking, damaged or that does not operate properly.



**Regarding the replaceable pot support**

- Always place the pot support on the burner head when in use. Never use the stove without first setting up the pot support.
- The stove must be used with the designated pot support. Always set up the pot support according to instructions.
- Confirm that the stove is completely cooled off when setting up or removing the pot support.
- Never apply excess force to the pot support. Failure to follow these instructions may cause the pot support to bend or deform.

**CAUTION:** Accessible parts may be very hot. Keep away from young children.

Do not modify this appliance.

- Never use auxiliary tools such as an iron plate, grill net, ceramic products, smoker etc, except those specified. These may cause an accident.

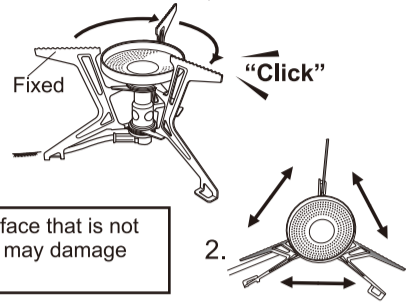
**Regarding the fuel canister**

- Carefully read the instructions displayed on the gas canister before using.
- Store the gas canister in a cool place. Avoid fire or direct sunlight at all times. Store in a dry area with a room temperature below 40 °C.
- Never leave the gas canister in a hot place such as in front of heaters. The heat from such heating devices may cause an explosion of the gas canister.
- Do not throw any gas canisters, used or unused, into a fire. Such action may cause a dangerous explosion and may lead to severe bodily injuries or property damage. Dispose of fuel properly as a hazardous material.
- Check stored gas canisters from time to time. Never use a canister when rust is present on it. Be sure to properly dispose of all gas canisters. Be sure to check with local authorities and follow their instructions when disposing of fuel canisters.
- Always check if the stove and the gas canister units are properly functioning when using the stove. From time-to-time, check for normal combustion during use.
- Avoid dangerous fuel leaks by making sure the canister and stove are threaded correctly. Detach the canister after use, and store canister separately.
- Keep stove and fuel canister away from all actual or potential heat sources.
- Store fuel canisters in a well-ventilated area out of the reach of children.
- Gas canisters must be changed in a well-ventilated location, preferably outside, away from other people and any sources of ignition, such as naked flames, pilot flames, electric heaters/equipment.
- Check that the cartridge is empty before changing it (shake to listen for noise made by the liquid). Check that burners are extinguished before disconnecting the gas container.
- How to check if the gas canister is empty: Install appliance onto fuel canister. Open valve to ignite. If no gas flows, the fuel canister is empty. Remove fuel canister from appliance. Gently shake to check for any residual fuel remaining inside.
- The following usages are strictly prohibited! The gas canister may overheat causing explosion or deformation of the burner:
  - Never use this stove to start charcoal
  - No parallel use of two or more stoves
  - Never use the stove in places where a gas canister may overheat due to heat from the sun.
  - Use of a windscreen, blocks, boards etc. is prohibited when the stove and the gas canister are in use. Failure to comply with this instruction may cause explosions, serious bodily injuries, and property damage.

**Setting up the stove**

1. To set the pot support, turn the pot supports clockwise until they stop.
  - One of the three pots supports is fixed. (See right illustration)
  - Make sure that the intervals between the three pot support are even.
  - Do not use excessive force when opening and closing the pot support.
  - If the pot support is deformed or bent, do not use the stove. A deformed pot support is unstable. The pot is likely fall. This is dangerous.

1. Rotate pot support clockwise until it locks into position.

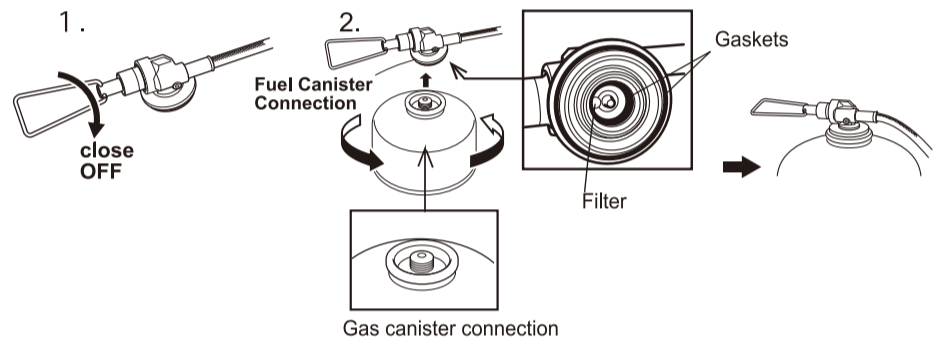


**⚠** Never operate the stove on a plastic table, or any other surface that is not heat resistant because the reflective heat from combustion may damage the surface of the table.

**Installation of fuel canister**

1. Turn the fuel control knob toward the OFF (right) position. Turn the knob until it stops. Be sure that the valve is completely closed. Do not over-tighten the fuel control knob as it may cause the stove to malfunction.
2. Remove cap from the gas container (cylinder) and install the valve section of the gas container correctly onto the connection or the base of the stove. Tighten by rotating the gas canister. When the stove stops, tighten the joint slightly more to secure the connection.

• Before connecting the stove onto the gas canister, always check the O-rings for any abnormalities.  
**IMPORTANT:** There is a small filter located inside the connection at the base of the stove. Always keep the filter and the gas connection areas clean. If foreign object or dust enters the connection, it may cause the micro regulator to malfunction.



**⚠ CAUTIONS and WARNINGS**

**Do not use 100% propane gas canister adapters with this product. Do not use adapters of any kind with this product. Never use a fuel canister that contains 100% propane. Failure to follow these instructions may result in death, personal injuries, and/or property damage.**

- Beware of gas leaks. If a gas leak is detected either by sound or gas odor after installing the gas canister, the incorrect installation of the gas canister may be the cause of the gas leakage. In this case, detach the gas stove from the gas canister immediately. Then re-install. If the leak sound still occurs, immediately detach the stove from the gas canister again. Contact SOTO and request inspection and repair.
- Be cautious not to get sand etc. into the connection part of the hose. Sand and soil may cause fuel leakage or clogging. When moisture such as water and snow is attached to the connection part of the hose and freezes, the fuel passage is obstructed, blocking the flow of fuel. Avoid any form of moisture on the hose tip while the fuel passage is frozen. Warm where frozen and melt ice to secure fuel passage when ambient temperature is below freezing.
- Be aware of fuel leaks. After installing the fuel canister, be sure to check for the sound of fuel leaks and/or odor.
- Never carry either the stove or the fuel canister when burning. This is dangerous, and such actions may cause burns and fire. Never move stove or fuel canister while burning.
- Check seals between the appliance and the gas canister. Seals must be in place and in good condition before connecting the gas canister. Do not use this appliance if it has damaged or worn seals. If there is a leak from your appliance (smell of gas) and you cannot stop the gas flow, remove the appliance to a well-ventilated location away from any ignition source. When stove completely cool, check for leaks using soapy water. Do not try to detect leaks using a flame.

ALWAYS keep the valve free from dust or sand. Do not allow the valve to touch the ground. Failure to follow this instruction may cause a blockage to the Micro Regulator valve system. It is important that the owner/operator should keep the valve free from foreign objects.

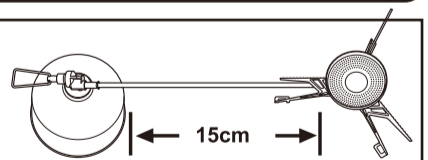
ALWAYS keep the plastic cap on the fuel canister valve when stowing or carrying. It is important that the owner/operator should keep the valve free from foreign objects.



**Ignition**

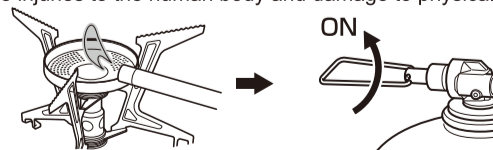
**⚠ WARNING**

**When using with a gas canister, maintain a minimum 15 cm. distance between the burner and canister at all times.**



Prepare the ignition source in advance and turn the fuel control knob in the ON (left) direction. When gas begins to flow, ignite the gas.

- Avoid burns during ignition.
- At high altitudes above 3000m, the electronic lighter will be difficult to ignite due to atmospheric pressure. Always carry spare matches or a flint-type (file-type) lighter.
- Do not put anything on the fuel hose. If the fuel hose is bent or crushed, the gas will not flow properly or the gas output may be reduced. Protect the fuel hose from being punctured. NEVER use the stove if a puncture or leak from the gas hose is detected. Contact SOTO for a repair. Failure to follow this instruction may cause severe injuries to the human body and damage to physical properties.

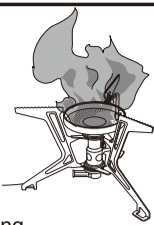


**⚠ WARNING**

**Do not use pots or kettles with heat exchangers when using SOTO stoves. This may cause a large amount of carbon monoxide to discharge. Inhaling the carbon monoxide is harmful to humans and other animals and may even cause death. Using a pot with a heat exchanger is strictly prohibited when using a SOTO stove.**

## CAUTIONS

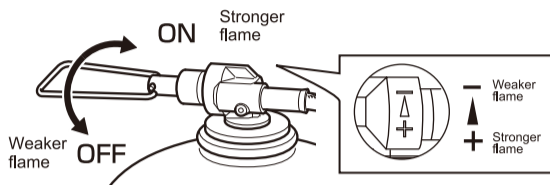
- Do not position the gas canister upside down while using the stove. Upside down position of the gas canister will produce the extremely dangerous raw gas.
- Strong winds and rough terrain may cause the canister to roll over. Be sure to set the stove and gas canister on the ground or a stable, flat base when in use.
- Do not turn the valve on the appliance to the open position immediately after shaking the appliance with the canister attached. A white misty gas (un-vaporized gas) may appear. This is dangerous. Turn valve off and do not ignite when a white mist of gas appears. There is danger of burns and fire when the flame leaps. When a white mist of gas no longer appears, it is safe to ignite the gas. Do not move the appliance when burning.
- Never remove the gas canister from the stove when the stove is in use.
- In case of an emergency, turn off the appliance by turning the Flame Control Knob to the OFF position (turn right) until no gas is supplied to the burner head.
- If the stove does not extinguish, use a fire extinguisher to extinguish the flame. Before touching the stove, always be sure that the fire is completely extinguished, and the stove is not hot. Then, remove the gas canister after the appliance is completely cooled down.
- If the Flame Control Knob is set to the OFF position, but the flame does not extinguish, do not forcibly rotate the Flame Control Knob. Burn the flame until gas runs out. Contact SOTO for inspection and repair.



**Important: Read these instructions for use carefully so as to familiarise yourself with the appliance before connecting it to its gas container. Keep these instructions for future reference.**

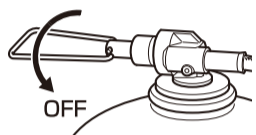
## Flame control

Adjust output by turning the flame control knob gradually while checking the flame. Simmering may cause the burner head to glow red or the flame to turn red. This is a normal phenomenon.



## Extinguishing the flame

Turn the gas control knob toward the OFF (right) position until it stops. Visually confirm that the flame has completely extinguished.



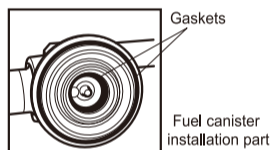
## Removing the gas canister

Turn the gas canister to the left and remove from valve. When removing stove from the gas canister, a small amount of gas may come out from between the stove's valve and the gas canister's valve as they are being separated. It is normal to hear a small amount of gas being released. The small amount of the gas is pooled inside the connection when the stove and the gas canister are engaging.

**Warning:** Storing the gas canister. Never store the stove when it is connected to the gas canister. Be sure to separate the stove and gas canister when storing. Storing a stove connected to the gas canister may cause gas leakage, fire, property damage, and death.

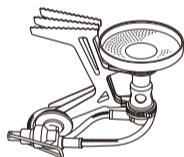
## Sound when disassembling the fuel canister

When the fuel canister is disassembled from the stove, a large pop sound may occur. This is due to the small amount of gas trapped between the two gaskets that are designed to prevent gas leaks. When the fuel canister is removed from the stove, a small amount of gas is released which makes this sound.



## Stowing

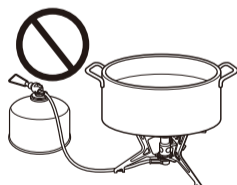
- Be sure that the stove is completely cool before stowing. Never touch the stove while it is hot. Failure to follow this instruction may cause severe burns to the human body. Turn the pot support toward the stowing position as shown in the illustration.
- Store the stove and accessories in the carry case.



\* When storing the stove, turn the pot support counterclockwise. Turning the pot support clockwise will cause damage to the stove.

## Caution: Avoid the following:

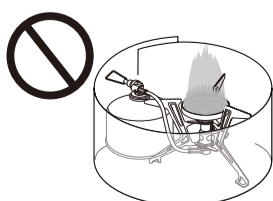
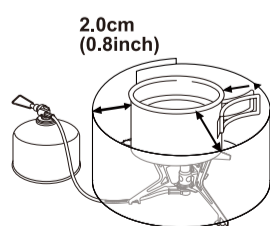
- If the fuel hose bends and the hose burns near the burner head, the hose will deteriorate due to heat from the flame. This may cause the fuel to leak. Extend the hose.
- Do not handle the fuel hose so that it bends more than 90 degrees. This may cause the fuel to leak.
  - Never use 2 stoves side-by-side (i.e., a griddle), as this may cause the stove to deform or explode.
  - Do not leave this product while operating.



## Windscreen sold separately.

### Caution when using the windscreen

- When using a windscreen other than SOTO's windscreen, be sure to use one made of non-flammable material such as metal. Never use a windscreen of combustible material as there is danger of such material catching fire.
- When installing the windscreen, keep a minimal distance of 2.0 cm (0.8 inch) between the pot and the windscreen to avoid producing a red flame. If using an aluminum windscreen, there is danger of the windscreen melting when exposed to heat.
- The windscreen is extremely hot during and after use. Never touch the windscreen until it cools down completely.
- The dimensions of the windscreen should be between 10 cm to 15 cm in height and 80 cm to 90 cm in width. An oversized windscreen may cause abnormal combustion and increase the possibility of unbalancing cooking utensils.
- Be careful that the flame inside the windscreen is not extinguished during use.
- Never cover the fuel with a windscreen while the stove is in use. Avoid exposing the fuel to heat. The bottle may explode if exposed to heat.



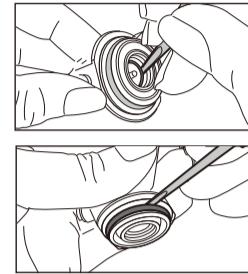
## Inspection and care

### Precautions for inspection and care

- Always inspect before and after use.
- Be sure to clean the burner, especially when food or liquid has spilled onto the burner head.
- Never use the stove when parts are broken or damaged.
- Incomplete repair is dangerous. Consult the retailer where purchased or SOTO when repair is needed.
- Before checking and cleaning, be sure to remove the gas canister after stove is completely cool.
- Never disassemble the hose unit.
- Dirt and moisture will cause damage to the stove. Wipe well with a dry cloth after use. Use a neutral detergent to remove dirt. Remove moisture with a dry cloth.
- Burner ... When perforated holes located on the burner are clogged, the clogged holes will cause incomplete combustion. When perforated holes become clogged with spilled food or liquid, etc., clean with mild detergent and a dry cloth.

Make a habit of keeping your stove clean.

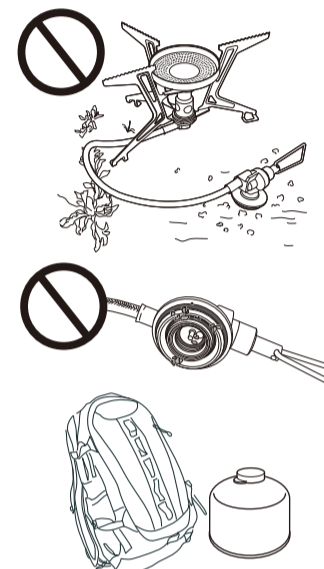
- The product should be maintained and serviced regularly. The O-rings should be replaced every 3 years. The stove's o-ring should be replaced when wear, cracking, or leakage occurs. A damaged or leaking stove must be repaired before use. Be sure to replace the old O-ring with a factory-authorized O-ring. Please contact SOTO for a replacement O-ring. Please contact your retailer or SOTO if you have any maintenance or repair-related questions.
- Carefully remove O-rings at the base of the unit with a small flathead screwdriver and/or with fingers (as shown in illustration). After gently removing the O-rings, use a soft cloth to remove any dust or debris that may have accumulated. Use fingers and a flathead screwdriver to install the new replacement O-rings.



## Caution and Warnings:

- Never disassemble or remodel the stove and other accessories other than as described in these manual instructions.
- Always use SOTO genuine parts.
- Be sure to perform maintenance after the stove has cooled completely.

Do not attempt any maintenance, modification, disassembly, or repair other than what is contained in this manual. Address any questions to the retailer where purchased or to SOTO. Service and any necessary replacement parts may be obtained by contacting [www.sotooutdoors.com](http://www.sotooutdoors.com). This appliance must only be serviced by an authorized person. ALWAYS keep the valve free from dust or sand. Do not allow the valve to touch the ground. Failure to follow this instruction may cause a blockage to the Micro Regulator valve system. It is important that the owner/operator should keep the valve free from foreign objects. ALWAYS keep the plastic cap on the fuel canister valve when stowing or carrying. It is important that the owner/operator should keep the valve free from foreign objects.



**Types of fuel :** 70% butane/30% propane mix gas cartridge

**Usage time :** approx. 1.3 hour (when using one SOTO SOD-725T 250g gas canister)

Usage time is calculated from combustion data for 30 minutes after ignition at 25°C with no wind.

**Weight:** 182g / 6.4 oz (body only)

**Dimensions when in use :** 43 x 14 x 10cm (16.9 x 5.5 x 3.9 inches)

**Dimensions when stowed :** 11 x 6 x 10cm (4.3 x 2.3 x 3.9 inches)

## Service and Warranty Information

### Warranty registration card

Detach and Return to SOTO within 30 days of purchase

Product: OD-1FT, FUSION Trek

Lot #: \_\_\_\_\_

Warranty period: One year from the date of purchase

Date of purchase: \_\_\_\_\_ (Copy of the receipt is required.)

Name: \_\_\_\_\_

Address: \_\_\_\_\_

City: \_\_\_\_\_ State: \_\_\_\_\_ Zip: \_\_\_\_\_

Amount paid: \_\_\_\_\_

Place of purchase:

Store name: \_\_\_\_\_

City: \_\_\_\_\_, State: \_\_\_\_\_, Zip: \_\_\_\_\_

( ) Gift, ( ) SOTO, ( ) Other \_\_\_\_\_

If purchased online, URL: \_\_\_\_\_

### Terms of Warranty

- Please return Registration-OD-1FT to SOTO. Proof of purchase is required and the warranty is non-transferable. The warranty does not cover damage caused by misuse, abuse, accident, or tampering. A fee will be assessed to repair the product with such damage. Please contact SOTO by phone or e-mail to receive a Return Authorization Number (RA) prior to shipping the damaged product to SOTO. Shipping cost to SOTO is the purchaser's responsibility. SOTO will pay the return postage.
- SOTO may not repair the product without the warranty and the product. If the product requiring repair is a gift and the retailer is unable to repair the product, please contact SOTO for further information.
- There will be a cost for repair for the following conditions, even if the product is under the warranty period:
  - Damage resulting from misuse or damage resulting from the repair or modification of the product.
  - Damage caused by dropping the product after purchase.
  - Damage caused during transportation. Damage caused by fire, earthquake, water, lightning, salt. Damage caused by any other natural disasters or pollutions.
  - The Warranty Registration must be forwarded to SOTO within a 30 day period after purchase.
  - In the event that the warranty card is lost, SOTO will not reissue it.

SOTO has made every effort to ensure that this product is in excellent condition. If you experience difficulties, DO NOT attempt to repair the product. Return it to your retailer or send it to SOTO at the below address.



**SOTO USA, INC**  
Oregon USA  
info@sotooutdoors.com  
Phone: 503-314-5119  
[www.sotooutdoors.com](http://www.sotooutdoors.com)