

REGULATOR STOVE ST-310


MANUAL INSTRUCTIONS

Be sure to read completely before using the ST-310, Regulator Stove. Review this manual regularly to maintain awareness of operational procedures and warnings.

USE OUTDOORS ONLY

! DANGER

ONLY USE IN WELL-VENTILATED AREAS.



CARBON MONOXIDE HAZARD

THIS APPLIANCE CAN PRODUCE CARBON MONOXIDE WHICH HAS NO ODOUR. USING IT IN AN ENCLOSED SPACE (FOR EXAMPLE, CARAVAN, TENT, CAR, MOBILE HOME) MAY CAUSE DEATH.

FOR YOUR SAFETY

If you smell gas

1. Do not attempt to light stove.
2. Extinguish any open flame.
3. Disconnect from fuel canister.

FOR YOUR SAFETY

Do not store or use gasoline or other liquids with flammable vapors in the vicinity of this or any other stove.

Shin Fuji Burner CO.,LTD.
1-1-3 Miyukihama, Mito-cho, Toyokawa-city,
Aichi-pref, 441-0314 Japan
Phone:+81 533 75 5000 FAX:+81 533 75 5033

SOTO USA, INC
Oregon USA
info@sotooutdoors.com
Phone : 503-314-5119
www.sotooutdoors.com

Particular attention should be paid to the following information

Actions marked " × " in the illustrations are strictly prohibited.

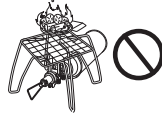
WARNING

Failure to follow the instructions and warnings contained in this manual may result in fire, property damage, injury or death.

CAUTION regarding overheating of the fuel canister

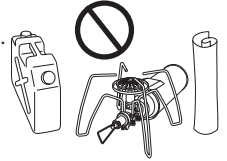
The following uses are strictly prohibited. Failure to observe the following instructions may cause the canister to explode due to overheating.

- NEVER use the Regulator Stove as a fire starter for charcoal or for any other purpose. The stove is intended for cooking only.
- NEVER use two stoves side by side.
- Never use the stove on hot beach sand or river stones that have been heated by direct sunlight.



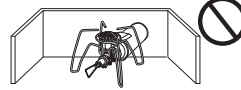
Cautions to prevent fire

- NEVER place any flammable items on or by the stove while in use.
- NEVER use the stove in an area where objects may fall.
- ALWAYS maintain a minimum distance of 4 feet (1.2 meters) from flammable objects when the stove is in use.





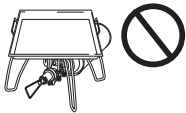

Place to use

- NEVER use this stove in an enclosed space such as a tent, car, camper, or home. The stove can produce carbon monoxide which has no odor and may cause death.
- ALWAYS place the stove on a flat and solid area when in use.
- AVOID direct sunlight and choose a shady area for use.
- NEVER use this stove near a heat source or open fire. Heat generated from the heat source and open fires will cause the temperature of the canister to increase which may lead to an explosion of the fuel canister.
- NEVER cover the stove with rocks and a windscreen while in use.
- ALWAYS use this stove for the single purpose of cooking.
- NEVER use it in any way for which it was not intended to be used. Failure to comply with this may cause damage or fire due to the heating.
- ALWAYS keep children away from the stove.



CAUTIONS

- ALWAYS ignite the flame first then place the pot on it!
- NEVER use cookware that generates any significant reflective heat!
- Never use wire mesh with ceramic, large steel plate for cooking, device that produce much reflective heat.
- Use of such devices described above will increase the fuel canister temperature which may cause an explosion.

Maintenance and care

Caution for maintenance and care

- Be sure to perform routine inspection and care before each use.
- Be sure to clean the burner head if the burner becomes dirty.
- NEVER use the stove if it is damaged or broken.
- NEVER try to repair the stove. Contact your store or SOTO if repair is needed.

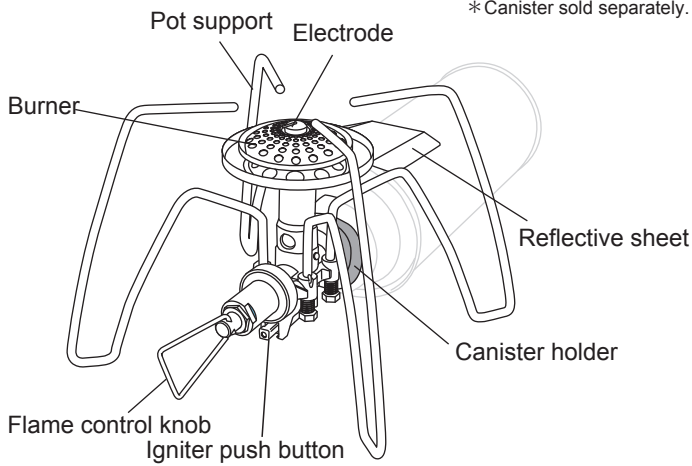
Caution regarding the electrode:

The electrode may not function well when dirty.

- ALWAYS clean boiled over food with a dry towel.
- NEVER move the position of the electrode while cleaning.

Part Names/Specifications

* Canister sold separately.



Product name: Regulator Stove

Model: ST-310

Dimensions when in use: 16.6x14.2x11.0 cm (6.6x5.7x4.4 inch)

Dimensions when stowed: 14.0x7.0x11.0 cm (5.6x2.8x4.4 inch)

Weight: 350 g (12.2 oz.)

Ignition: Stealth Igniter installed

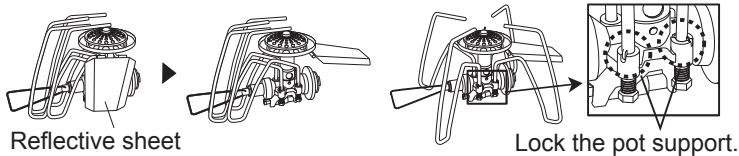
Type of fuel: LPG/Butane

Gas consumption: 120g/h

Operating instructions

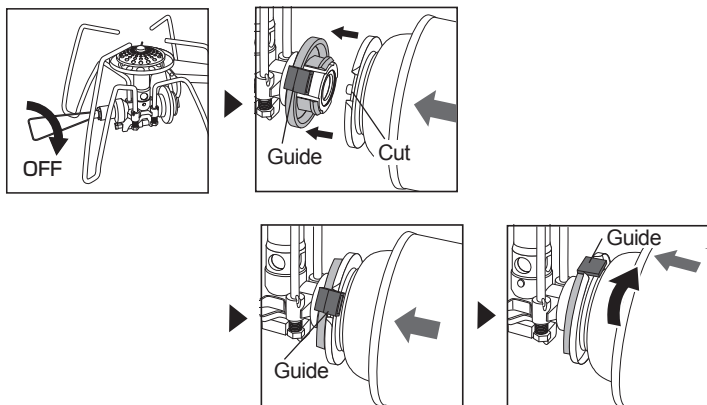
Setting the burner:

Turn the reflective sheet upward as shown in the illustration. Spread open the 4 pot supports until they are in the locked position. Confirm that each pot support is firmly locked and secured.



Installation of the canister:

Confirm that the guide on the canister holder is at the correct position (turned all the way to the left). Push fuel canister against the guide section, then turn fuel canister according to the direction.

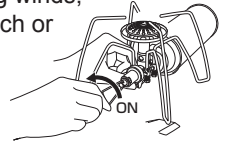


CAUTION:

Beware of gas leaks while installing the canister to the stove. If you detect a gas leak by smell or sound, the stove is not properly installed. Uninstall the stove from the canister and reinstall it again. If the leak is still detected, send the stove back to store where purchased or to SOTO for further inspection.

Igniting the Stove:

Turn the flame control knob to the left (counterclockwise) approximately 1.5 times. Push the Stealth Igniter to light the stove. If the stove does not light immediately, turn the flame control knob to the OFF position and repeat the process. If the stove does not ignite due to natural conditions such as strong winds, temperature, or moisture in the air, use a match or lighter to ignite the stove.



Adjusting the output:

Turn the flame control knob to adjust the flame. CAREFULLY avoid touching the pot support during this procedure. Touching the pot support during use may cause burns.

Extinguishing the Flame:

Turn the flame control knob fully to the right (clockwise) to the OFF position.

WARNINGS:

- Beware of raw gas! DO NOT ignite when a raw gas leak is detected. Turn the flame control knob to the OFF position and repeat the lighting procedure.
- Never move the stove while in use. Failure to follow this instruction may cause the flame to suddenly leap due to a raw gas leak. This may result in burns or an accidental fire. NEVER carry or move the stove while it is in use.

CAUTION for burning:

Never touch the pot support while stove is in use. Wait until it has cooled off after use. Failure to follow this instruction may cause severe burning.



Removing the fuel canister:

Turn the fuel canister counter-clockwise 60 to remove canister from the stove.

WARNING:

- ALWAYS remove the fuel canister before stowing the stove.
- NEVER stow the stove with the fuel canister installed. If the stove is installed onto the canister and it is dropped or impacted, a gas leak or fire may result.

Stowing the stove:

Make sure that the stove is completely cooled before stowing the product. The pot support must be closed by lifting slightly upwards and turning downwards under the burner head. Place the stove into the carrying case.