

# 4Flex

4-prong pot support for the WindMaster  
OD-1RX4 Patent Pending

**USE OUTDOORS ONLY**

**⚠ DANGER**

**ONLY USE IN WELL-VENTILATED AREAS.**



**CARBON MONOXIDE HAZARD**  
THIS APPLIANCE CAN PRODUCE CARBON MONOXIDE WHICH HAS NO ODOUR. USING IT IN AN ENCLOSED SPACE (FOR EXAMPLE, CARAVAN, TENT, CAR, MOBILE HOME) MAY CAUSE DEATH.

## FOR YOUR SAFETY

**If you smell gas**

1. Do not attempt to light stove.
2. Extinguish any open flame.
3. Disconnect from fuel canister.

## FOR YOUR SAFETY

**Do not store or use gasoline or other liquids with flammable vapors in the vicinity of this or any other stove.**

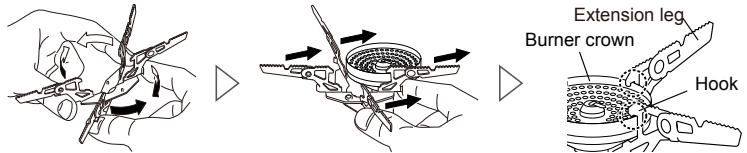
# INSTRUCTION MANUAL

Be sure to read this manual before using the stove. Keep this manual for future reference, and review its contents regularly to maintain awareness of procedures and warnings. Failure to follow the warnings described in this manual may result in fire, property damage, injury, or death.

## Installing the 4Flex pot support

1. Hold the 4Flex securely with both hands and open it.
2. Slide the open part of the pot support onto the burner head. The pot support will automatically close when released.
3. Confirm that the 4 hooks are firmly gripping the burner crown, and each of the pot supports are at a 90-degree angle from each other.

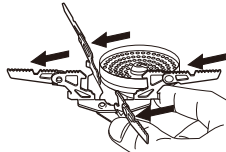
**Cautions:** Always use the 4Flex with the extension legs in the fully opened position. Never place a pot on the pot support when the extension legs are in the folded position.



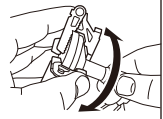
## Removing the 4Flex pot support

**Cautions:** Make sure the stove has completely cooled off before attempting to remove 4Flex from the stove.

Hold the lower part of the pot support, then remove the pot support from the burner head.



When encountering difficulties removing the pot support, firmly fold the 4Flex and turn it gently.



**Shinjuji Burner CO.,LTD.**

1-1-3 Miyukihama, Mito-cho, Toyokawa-city,  
Aichi-pref, 441-0314 Japan  
Phone:+81 533 75 5000 FAX:+81 533 75 5033

**SOTO USA, INC**  
Oregon USA

info@sotooutdoors.com  
Phone: 503-314-5119

[www.sotooutdoors.com](http://www.sotooutdoors.com)